



Helvar

ILLUSTRIS

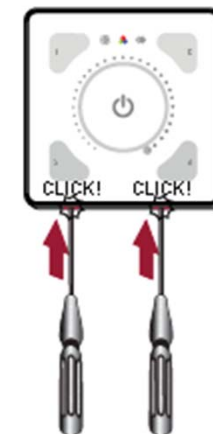
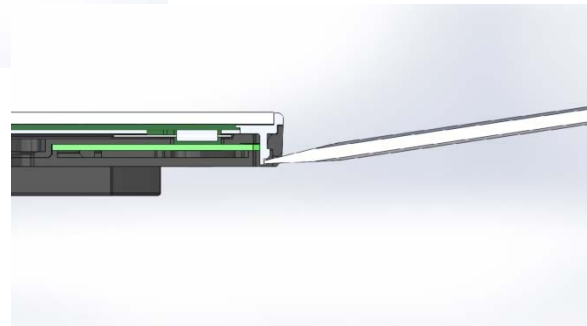
Installation manual



ILLUSTRIS

FASCIA REMOVAL

- Once attached, the front fascia is deliberately hard to remove from the DALI interface.
 - Connectors are DALI - potentially live
 - Clips need to be strong to meet safety standards
- Removal with a screwdriver is possible but can be tricky



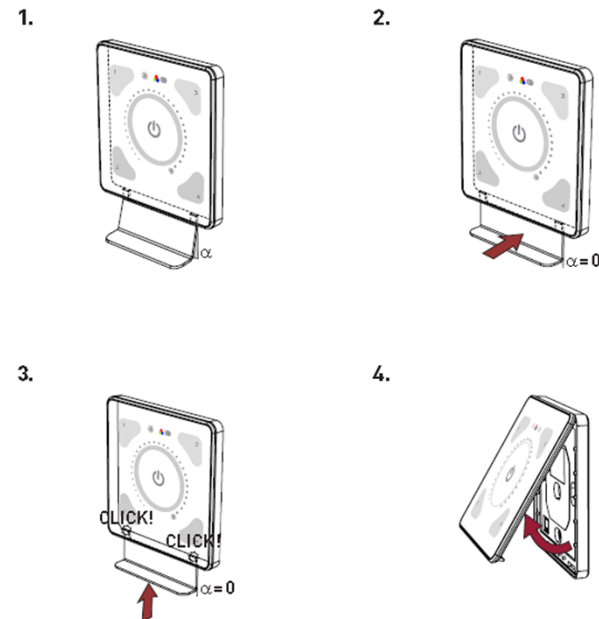
ILLUSTRIS

ALTERNATIVE SOLUTION (INTERIM)

- To aid any customers having problems removing the fascia, a removal tool will be made available.
 - 500 pcs being made
 - A quantity will be allocated to each sales region FOC
 - Sales regions are responsible for distributing to customers
- Documentation: Addendum included in front fascia box



Removal tool



ILLUSTRIS

PERMANENT SOLUTION

- The plastics have been redesigned
 - Insertion point for screwdriver moved
 - New design creates leverage to free the clips
- Tooling is being modified
 - Revised hardware will be in stock in 8 weeks from launch.
 - New fascia will not be compatible with old DALI interface and vice versa

